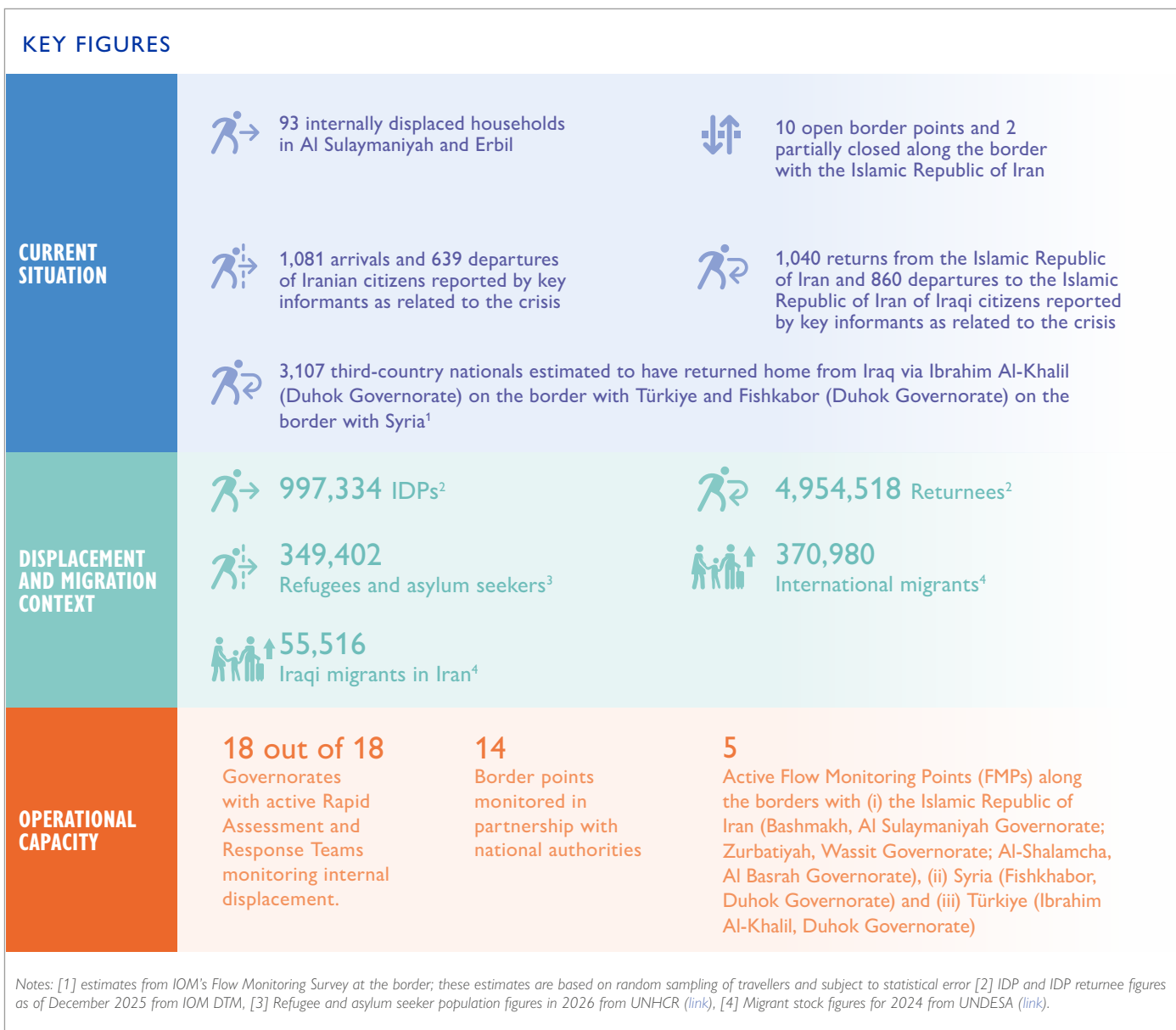


UPDATE ON CROSS-BORDER MOBILITY AND INTERNAL DISPLACEMENT IN IRAQ

SITUATION AS OF 13 APRIL 2026

Regional tensions continue following escalatory actions in and around the Islamic Republic of Iran since late February 2026. Despite a two-week ceasefire in effect since 7 April, the situation remains fluid in Iraq, with disruption to airspace, civilian mobility, and humanitarian access across multiple countries. This crisis compounds pre-existing vulnerabilities linked to Iraq's complex security dynamics and protracted displacement associated with the conflict with the Islamic State of Iraq and the Levant (ISIL). Continued monitoring of internal displacement and cross-border mobility dynamics remains critical to inform operational planning, preparedness, and humanitarian response.



OPERATIONAL CAPACITY FOR DISPLACEMENT MONITORING

The International Organization for Migration (IOM) plays a key role in the systematic collection, analysis and dissemination of data on migration and displacement in Iraq. Working in close coordination with the Ministry of Migration and Displacement (MoMD), IOM monitors mobility dynamics across the country and at its borders.¹ IOM implements its global data

collection system, the Displacement Tracking Matrix (DTM), applying standardized methodologies to generate timely, reliable, and comparable data on population movements. DTM provides granular, location-level information on displacement trends, population profiles, and mobility patterns, enabling continuous monitoring of evolving dynamics. DTM data

1 See the DTM Methodological Framework.

serves as a critical evidence base for operational planning and decision-making, supporting humanitarian, recovery, and stabilization interventions. As a global public good, IOM makes DTM data available to government counterparts and humanitarian partners to inform coordinated response efforts, enhance targeting of assistance, and optimize the allocation of resources across preparedness, response, and return contexts.

To monitor **internal displacement and return in Iraq**, IOM DTM relies on trained Rapid Assessment and Response Teams (RARTs), consisting of 40 local responders with over a decade of operational experience. RARTs maintain deep-rooted institutional connections to local authorities across all governorates, with the capacity for rapid scaling, and leverage a network of approximately 3,732 key informants. RARTs provide constant situational awareness and early warning, monitoring local developments and verifying any reports of displacement through Emergency Tracking assessments at the location level. Additionally, they conduct regular countrywide assessments to update displacement stock estimates and, based on need, multi-sector needs assessments.

DRIVERS OF INTERNAL DISPLACEMENT

Since the start of the crisis, IOM tracked 93 internally displaced households, with no additional instances of displacement recorded since 7 April. While several conflict-related fatalities were reported, displacement events remain limited despite ongoing drone and airstrikes in seven governorates during the reporting period.

Since the start of the crisis, airstrikes and drone attacks have been reported in at least 15 governorates, including Al Anbar, Babil, Baghdad, Al Basrah, Diyala, Duhok, Erbil, Kerbala, Kirkuk, Al Najaf, Ninewa, Missan, Salah Al-Din, Al Sulaymaniyah, and Wassit. Many incidents continue to target military and security forces. During this reporting period, two drones attacked a Peshmerga base in Chwar Qurna, Rania district (Al Sulaymaniyah Governorate), causing material damage but no injuries. A drone targeted an oil field in Chamanke, Amedi district (Duhok Governorate). Airstrikes hit a vacated Hezbollah-affiliated headquarters in Amerli, Tuz Khurmatu district (Salah Al Din Governorate) and a Popular Mobilization Forces (PMF) camp in Al-Azim area, Khalis district (Diyala Governorate), causing explosions at an ammunition depot with no reported casualties in either case. Adding to the instability, Iraqi forces imposed a curfew in Al Qa'im due to tribal conflict, which unrelatedly coincided with three airstrikes on PMF headquarters in the same location with casualties being unconfirmed at the time of writing.

Separately, three rockets struck farmland in Khor al Zubair, Al-Zubair district (Al Basrah Governorate), resulting in the deaths of five family members and material damage. While the origin of these airstrikes remains unconfirmed, local perceptions linked these to Kuwait, prompting demonstrations outside the Kuwaiti consulate in Basrah city. Despite the ceasefire, Harir Airbase in Erbil Governorate was attacked, and explosions were heard near Zirgwezalla village (Erbil Governorate) with no reported casualties. Several drones fell on houses in Baghdad (Baghdad Governorate), specifically in Al-Amiriya, Al Ghazaliya, and Palestine Street, reportedly causing deaths and injuries, although no official reports have been released.

Iraq continues to face economic uncertainties amid rising prices due to increased tariffs and the crisis-induced instability. During the reporting period, key informants reported long queues at gas stations across Muthanna Governorate amid a severe shortage of gasoline, kerosene, and cooking gas. During the previous week, there were increased reports of attacks on oil infrastructure, such as drone attacks on oil infrastructure in Erbil, Al Basrah, Missan and Duhok Governorates with some incidents resulting in casualties or injuries.

To monitor **cross-border mobility and displacement in Iraq**, IOM DTM operates flow monitoring points (FMPs) at key transit locations, such as border crossings and major travel routes. At these points, trained enumerators conduct short interviews with travellers to collect data on population movements, including routes, demographics, mode of travel, and reasons for crossing. IOM currently operates three FMPs **along the borders with the Islamic Republic of Iran** (Bashmakh, Al Sulaymaniyah Governorate, active since 15 March 2026; Zurbatiyah, Wassit Governorate, and Al-Shalamcha, Al Basrah Governorate, active since 17 March 2026), one on the border with Syria (Fishkhabor, Duhok Governorate) and one on the border with Türkiye (Ibrahim Al-Khalil, Duhok Governorate), collecting data on a daily basis. Additionally, IOM works closely with the Ministry of Interior and the Border Commission to monitor mobility dynamics across a broader set of border crossing points (BCPs).

Following reports of government warnings to residents regarding water use in the oil-polluted Tigris River in the previous reporting period, IOM has now received accounts of mass fish deaths causing widespread economic and health-related concerns. This has led to strong public anger against the central government, blaming mismanagement. As a result, the Wassit water directorate has shut down all water treatment plants and urged residents to conserve water. IOM's border crossing monitoring has tracked a convoy of around 25 vehicles from Iran heading to Wassit on 10 April with chlorine and sanitation equipment destined to provide support with the water contamination crisis in the governorate.

Combined with the ongoing escalation despite the ceasefire, sustained insecurity, infrastructure damage, economic deterioration, and environmental shocks, dynamics point to a deteriorating humanitarian situation with a high likelihood of further displacement if conditions persist or intensify.

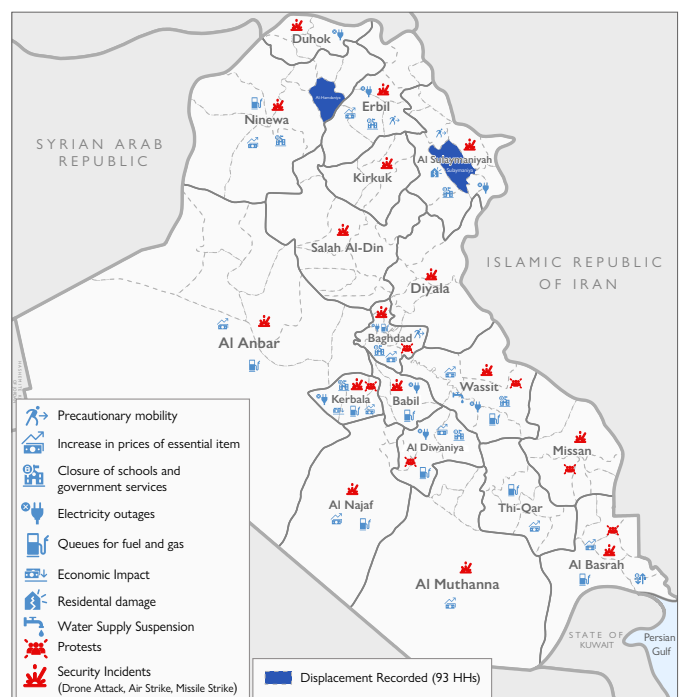


Figure 1: Humanitarian impact of the crisis and displacement risk factors inside Iraq. The information is reported at the governorate level based on reports from DTM field teams and media sources since 1 March 2026 and may not be exhaustive. This map is for illustration purposes only. Names and boundaries do not imply official endorsement or acceptance by the International Organization for Migration (IOM).

CROSS-BORDER MOBILITY²

Islamic Republic of Iran Border Monitoring

Iraq shares a long land border with the Islamic Republic of Iran that runs across six governorates: four in Federal Iraq, Diyala, Wassit, Missan, and Al Basrah, and two in the Kurdistan Region of Iraq (KRI), Erbil and Al Sulaymaniyah. Regular cross-border movements take place between the two countries for trade, business, tourism, and religious activities. Notably, during this reporting period, none of the 12 BCPs were reported as fully closed with an overall trend towards reopening with increased regular movements since the initial closures following the start of the conflict.

As of 13 April 2026, border conditions remained broadly stable compared to the previous reporting period (week ending 6 April), with most crossing points remaining open and no major restrictions observed. Across the Iraq–Iran border, the number of fully open crossings increased by one: Kele in the Al Sulaymaniyah governorate fully opened on 12 April reportedly due to the ceasefire after being partially or completely closed since the beginning of the crisis. Fully open border points include Al Shalamcha (Al Basrah governorate), Bashmagh, Kele, Pshta, Siran Bin and Twila (Al Sulaymaniyah), Muntheriya (Diyala), Hajj Omran (Erbil), Al Sheeb (Missan) and Zurbatiyah (Wassit). Travel through some BCPs such as Pshta and Sumar / Mandeli remained limited to trade movements only, as was the case prior to the crisis.

Partial closures continued to be reported at Sumar (Diyala) and Broizkhan (Al Sulaymaniyah) border points. In the latter, travel for Iraqi citizens is limited to the elderly and travelers with medical needs. Partial closure in Broizkhan was reportedly due to the escalations despite the ceasefire. In Diyala, limited movement was instructed by authorities on both sides of the border.

With no increase recorded during this reporting period, estimates by border officials suggest that at least 1,040 Iraqi nationals have returned by land since 6 March for reasons described by border officials as related to the current escalations (see Table 1 for daily movement estimates as of 13 April). The cumulative number of Iraqi nationals reportedly traveling to the Islamic Republic of Iran for the same reasons remained at 860 as

of 13 April. Additionally, border authorities estimated 1,081 arrivals and 639 departures of Iranian nationals linked to the escalations representing a small increase of two and three per cent during the reporting period. As of 13 April, the estimated number of third-country nationals (TCNs) who had entered Iraq due to the current crisis remained unchanged at 10, with no new arrivals reported since 29 March.

Across all open and partially open BCPs, key informants reported continued regular commercial and non-commercial cross-border flows in both directions.³ Since 6 March, a total of 64,018 entries and 64,025 exits were recorded. Border authorities indicated that these flows are routine and are not linked to the current escalations. Between 7 and 13 April alone, 18,894 incoming and 18,117 outgoing regular movements were reported – more than doubling numbers since the previous week. Data on movements were unavailable for some open or partially open BCPs, meaning the reported figures likely underestimate movement flows. In some BCPs, figures seemingly decreased but this was ultimately due to a lack of access to information.

In terms of daily movement, nine BCPs reported incoming movements and ten BCPs reported outgoing movements.⁴ Flows on 13 April were broadly unchanged compared to the previous day apart from increases in the newly re-opened Kele and decreases reported in Al Shalamcha and Al Sheeb. During this reporting period, border authorities reported that Hajj Omran (Erbil Governorate) continued temporary measures allowing entry for people lacking documentation.

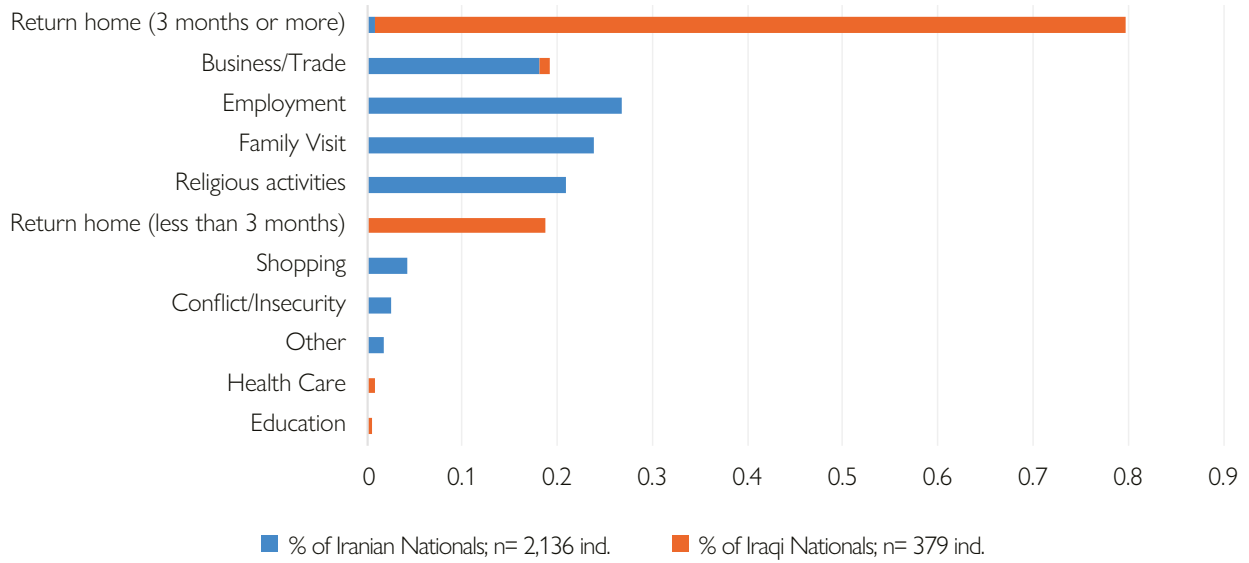
Two BCPs, namely Zurbatiyah (Wassit Governorate) and Al Shalamcha (Al Basrah Governorate) continued reporting preparedness measures for a potential emergency. Led by border authorities, this included support to border health facilities in both BCPs in addition to improvements to water, hygiene, and sanitation services in Al Shalamcha. Al Shalamcha BCP also reported approximately five instances of airstrikes near the border crossing points and periodic shelling in the surrounding area on 7 April. Iraqi officials deployed ambulances and fire trucks and established an emergency response and evacuation plan at the Iraqi side of the border.

² Border monitoring relies on key informant estimates from border officials across all BCPs.

³ Apart from Fridays when some BCPs close habitually

⁴ Nine BCPs reported incoming movements (Al Shalamcha, Bashmagh, Broizkhan, Twila, Siran Bin, Al-Sheeb, Zurbatiyah and Kele) and ten reported outgoing movements (Al Shalamcha, Bashmagh, Broizkhan, Twila, Hajj Omran, Siran Bin, Muntheriyah, Al Sheeb, Zurbatiyah).

Incoming reasons proportional to nationality*



Exiting reasons proportional to nationality*

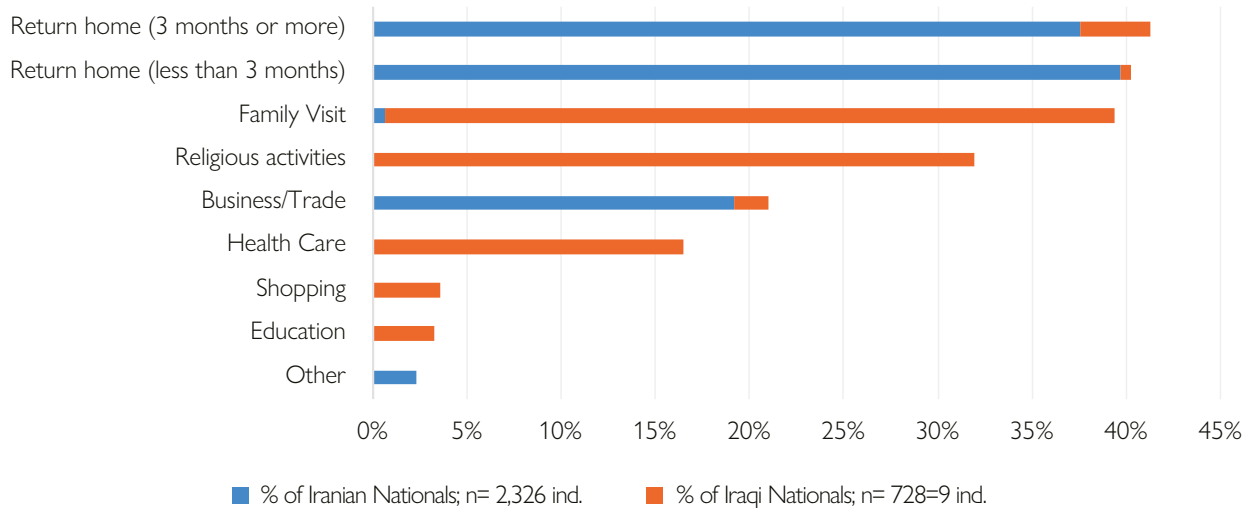


Figure 3: breakdown of arrivals from and departures to the Islamic Republic of Iran by reason for movement

*TCNs are not represented. Some 19 TCNs entered to renew visa, for business and to return home. Two TCNs exited to renew their visa.

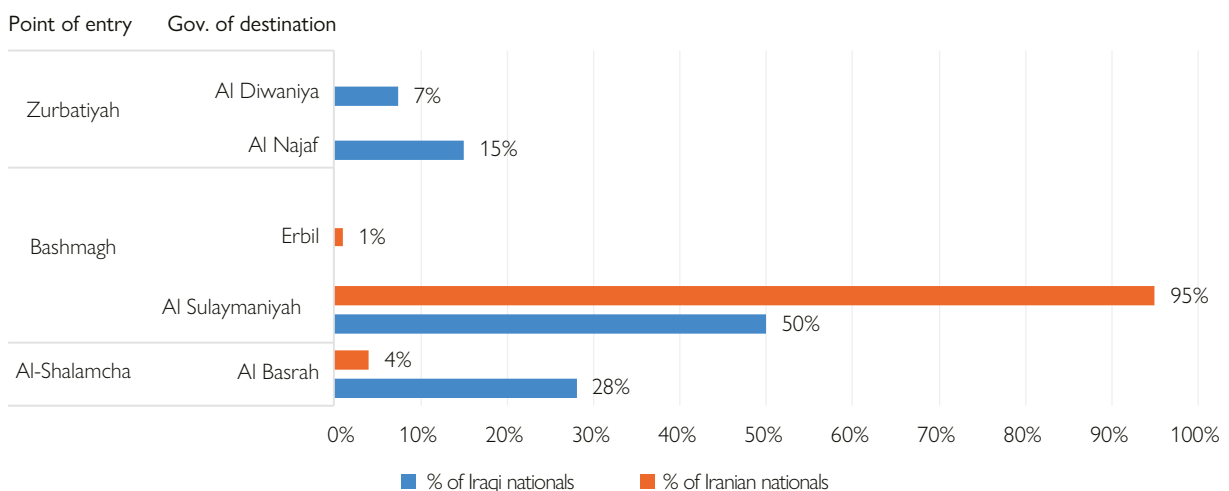


Figure 4: breakdown of arrivals from the Islamic Republic of Iran of Iranian citizens (movements related to the crisis) and Iraqi citizens returning home (3 months or more) by Flow Monitoring Point and governorate of destination.

Türkiye and Syria Flow Monitoring

IOM is also conducting Flow Monitoring Surveys at Ibrahim Al-Khalil (Duhok Governorate), on the border with Türkiye, and Fishkabor (Duhok Governorate), on the border with Syria. Due to the volume of traffic, these surveys are conducted with a random sample of travellers using interval sampling and are therefore subject to statistical error. Based on

this data, IOM estimates that 3,107 TCNs returned home from Iraq via these two land crossings between 10 March and 13 April 2026.⁸ The countries of nationality of these travellers included Türkiye, Germany, Syria, Sweden, China, Portugal, South Africa, Italy, France, Portugal, the United Kingdom, and the United States of America.

Table 1: status of border crossing points along the Iraq-Iran border and estimated flows based on reports by border authorities: 13 April 2026

GOVERNORATE	BORDER POINT	TYPE	STATUS	INCOMING MOVEMENTS DAILY ESTIMATE ON 13 APRIL	OUTGOING MOVEMENTS DAILY ESTIMATE ON 13 APRIL
Al Basrah	Al-Shalamcha	Formal	Open	1 Iranian national arrived due to conflict. Slight decrease to previous day but regular movements increased sharply since previous week. 1,733 ind. regular movements on 13 April.	Slight decrease to previous day but movements increased sharply since previous week. 1,962 ind. regular movements on 13 April.
Diyala	Sumar / Mandeli	Formal	Partially open	None reported; commercial transit permitted	None reported; commercial transit permitted
Diyala	Muntheriyah	Formal	Open	None reported	Increase of regular movements during the reporting period
Erbil	Hajj Omran	Formal	Open	Severe weather conditions and insecurity have led to a decrease. Current lack of access to data.	Severe weather conditions and insecurity have led to a decrease. Current lack of access to data.
Missan	Al-Sheeb	Formal	Open	Lack of access to data	Lack of access to data
Al Sulaymaniyah	Bashmagh	Formal	Open	Slight increasing trend of regular movement.	15 Iranian nationals – movement linked to Iran conflict. Slight increasing trend of regular movement.
Al Sulaymaniyah	Broizkhan	Formal	Partially open	Movement flows stayed consistent with the previous day Commercial transit permitted. Lack of sufficient data.	Movement flows stayed consistent with the previous days; Commercial transit permitted. Limited access to Iraqi nationals. Lack of sufficient data.
Al Sulaymaniyah	Twila	Formal for KRI only	Open	Movement flows stayed consistent with the previous days. None reported.	Movement flows stayed consistent with the previous days. None reported.
Al Sulaymaniyah	Kele	Formal for KRI only	Open	Crossings picked up again after closure but remain low.	Crossings picked up again after closure but remain low.
Al Sulaymaniyah	Siran Bin	Formal for KRI only	Open	Movement flows stayed consistent with the previous day. Lack of access to exact figures.	Movement flows stayed consistent with the previous days. Lack of access to exact figures.
Al Sulaymaniyah	Pshata	Formal for KRI only	Open	None reported; commercial transit permitted (as before the conflict)	None reported; commercial transit permitted (as before the conflict)
Wassit	Zurbatayah	Formal	Open	29 Iranian nationals – movement due to conflict. Increasing trend of regular movements.	Increasing trend of regular movements.

⁸ The estimates are based on a sample size of 837 respondents (686 at Ibrahim Al-Khalil and 151 at Fishkabor), out of whom 125 were TCNs returning home, weighted for the overall volume of traffic at each location. Data collection takes place only during regular working hours and was suspended 1-9 March as a security precaution.